

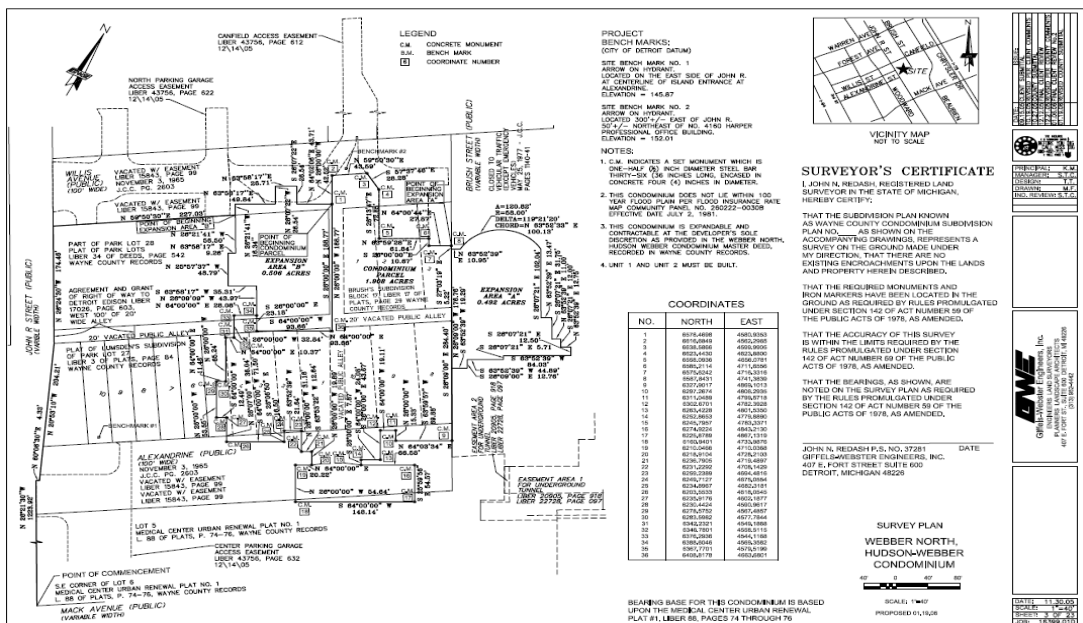
Client
Karmanos Cancer Institute
Rossetti Associates Architects

Client Contact
Mr. Cliff Crabtree
313.952.0139
Mr. Doug McLean, AIA
248.262.8300

Giffels Webster Contact
Scott Clein, PE
LEED AP
President/Partner

Completion Date
2008

Services Provided
Civil Engineering
Surveying



Giffels Webster has worked closely with the Karmanos Cancer Institute to assist them in their endeavor to build a new state-of-the-art cancer treatment center on the campus of the Detroit Medical Center. Our initial services included the preparation of a detailed utility study of the site. Subsequently we also prepared several land surveys of portions of the campus, which included boundary, topographic, and utility information. We prepared documentation to allow for the split of existing parcels per Public Act 132.

This information was used to assist in the programming of proposed improvements including the size of the new parcel; the location; and size of the new facility's footprint, potential traffic flows, and proposed utility connections. Detailed project construction staging plans were also developed to allow for continued use of the adjacent Harper Professional Office Building and emergency ambulance entrances.

Giffels Webster provided supplemental surveying and engineering services to the project architect, Rossetti Associates, related to the development of the new cancer research and patient care facility. Services include coordination with the designers of an underground parking structure and major modifications to the traffic patterns in the project area. While our designs have been completed, the project is currently on hold while suitable private funding is secured.