



Client
U. S. Army Corps of Engineers

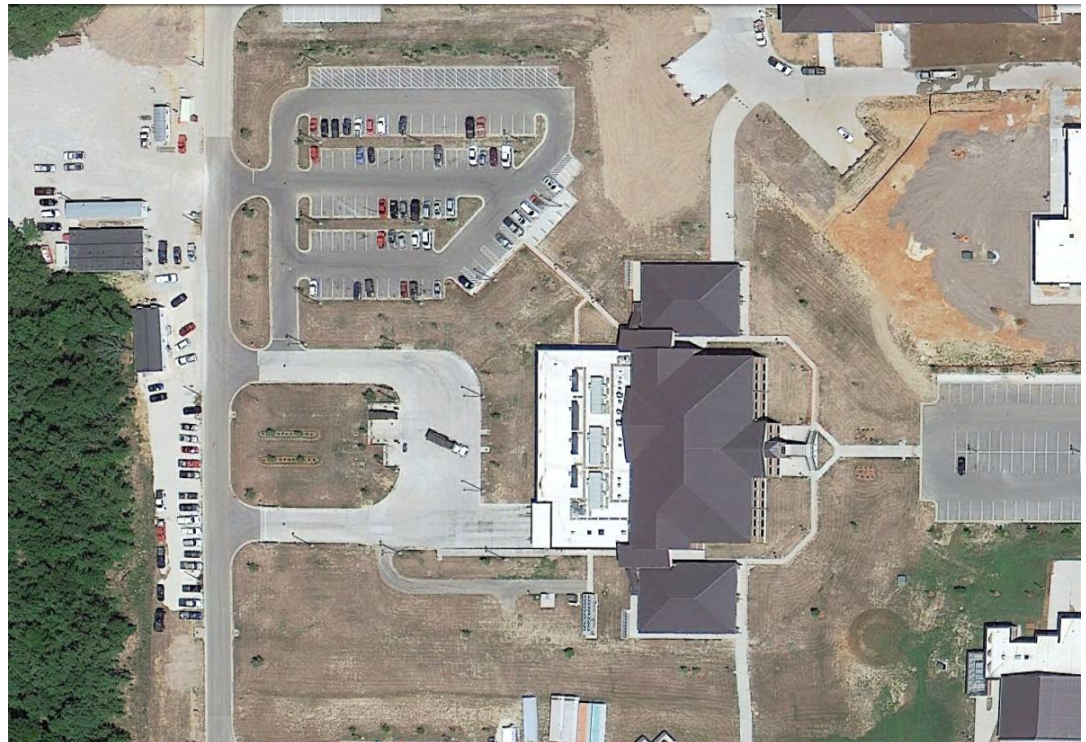
Client Contact
Mr. Kent Spence
816.389.3528

Giffels Webster Contact
Scott Clein, PE
LEED AP
President/Partner

Michael Darga, PE
Senior Project Manager

Completion Date
2010

Services Provided
Civil Engineering
Surveying
Landscape Architecture



Giffels Webster was part of the team awarded a design/build dining hall contract by the U. S. Army Corp of Engineers. Three dining halls have completed to date: Ford Leonard, Fort Sill and Fort Leavenworth. Giffels Webster supplied civil engineering, surveying, and landscape architecture services for each. All have been designed to achieve LEED Silver rating.

The Fort Leonard Wood dining hall project consisted of the construction of a new 56,000-square-foot dining facility, parking lot, and loading dock area to support the expansion of the adjacent Basic Combat Training complex that was being constructed. The 2,600-person per meal dining facility has 1,088 seats and was co-located with several other new facilities.

Coordination requirements were necessary to ensure that all the facilities would come together to support the complex's construction and future expansion. The civil engineering portion of project included site utilities (gas, water, sanitary sewer, and storm drainage), site grading, parking lot, loading dock and ramp detailing, and coordination with adjacent projects.