

Client
The Pantry

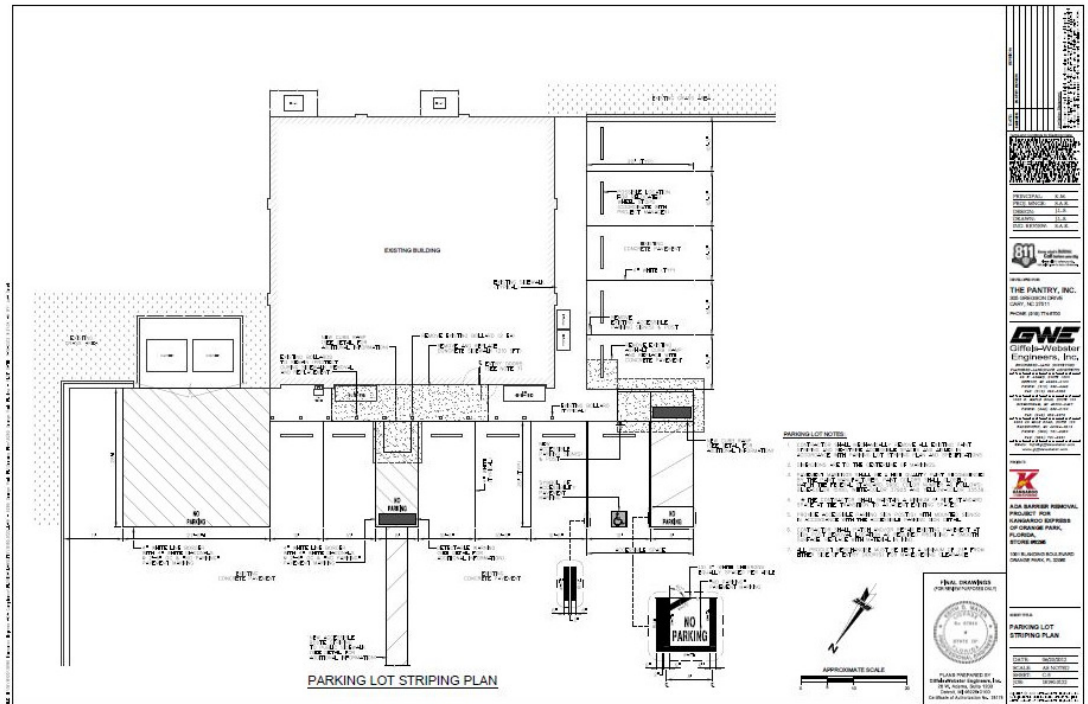
Client Contact
David Whittington, PE
Store Planning & Design
919.566.1011

Giffels Webster Contact
Scott Ringler, PE
LEED AP
Partner

Keith Mayer, PE
Partner

Completion Date
On-going

Services Provided
Civil Engineering



Compliance with the American with Disabilities Act, and more particularly with the accompanying design guidelines, has become more complex over the years. Several private clients have therefore turned to Giffels Webster for guidance and assistance.

One client in particular, The Pantry, has relied on Giffels Webster to assist in their corporate ADA compliance program. The Pantry, Headquartered in Cary, North Carolina is the leading independently operated convenience store chain in the southeastern United States and one of the largest independently operated store chains in the country. The Company operates 1589 stores in thirteen states, its primary banner being Kangaroo Express.

Kangaroo Express has undergone a transformation with store renovations, a component of which is to review and improve ADA compliance throughout the system. In an effort to support The Pantry in upgrading its facilities Giffels Webster helped to create a streamlined process to assist them in achieving this goal. Giffels Webster mobilized within 30 days to work with The Pantry in the development of standard details, notes, specifications and a standard drawing format to meet their aggressive schedule sometimes exceeding 8 to 10 stores completed per week. One major advantage that Giffels Webster brought to the table was that our professional engineers are registered throughout the country.